

Name: _____

Date: _____

Similarity: Triangle Theorems

Similarity is when two objects are the same shape, but not necessarily the same size. We can use similarity to solve for right triangles. It has three properties that we will deal with.

Reflexive Property of Similarity: $\triangle XYZ \sim \triangle XYZ$

Symmetric Property of Similarity: If $\triangle XYZ \sim \triangle TUV$, then $\triangle TUV \sim \triangle XYZ$

Transitive Property of Similarity: If $\triangle XYZ \sim \triangle TUV$ and $\triangle TUV \sim \triangle LMN$, then $\triangle XYZ \sim \triangle LMN$

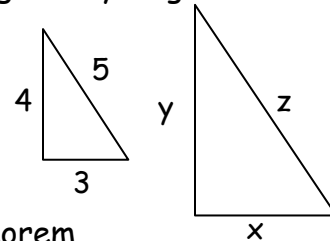
Example 1: Two similar right triangles are given. Apply a scale factor of 2 to determine the side lengths of the second triangle. Check your answer using the Pythagorean Theorem.

Step 1: Multiply the known values by the SF.

$$X = 3 \cdot 2 = 6$$

$$Y = 4 \cdot 2 = 8$$

$$Z = 5 \cdot 2 = 10$$



Step 2: Check your answer using Pythagorean Theorem

$$a^2 + b^2 = c^2$$

$$(6)^2 + (8)^2 = (10)^2$$

$$36 + 64 = 100$$

The Side-Side-Side (SSS) Similarity Theorem states that if the three sides of one triangle are proportional to the three corresponding sides of another triangle, then the triangles are similar.

Example 2: Line segment AB is drawn parallel to one side of $\triangle YXZ$, bisecting XZ. Determine the measurements of $\triangle ABZ$ using the SSS similarity theorem.

Step 1: Use Pythagorean Theorem to determine the length of XZ.

$$(26)^2 = (24)^2 + (XZ)^2$$

$$(26)^2 - (24)^2 = (XZ)^2$$

$$676 - 576 = (XZ)^2$$

$$(XZ)^2 = 100$$

$$XZ = 10$$

Step 2: Determine the length of BZ

Bisect means to cut in half.

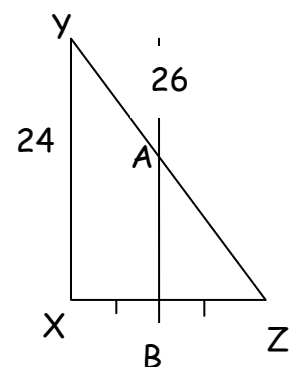
$$BZ = \frac{1}{2} XZ = \frac{1}{2} (10) = 5$$

$$BZ = 5$$

Step 3: Determine the scale factor of $\triangle YXZ$: $\triangle ABZ$

If BZ is $\frac{1}{2}$ XZ, then our scale factor is $\frac{1}{2}$.

Step 4: Use SSS similarity theorem to apply scale factor and find the unknown measures: AB = 12; AZ = 13; BZ = 5

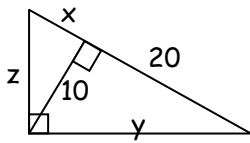


Name: _____

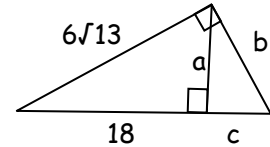
Date: _____

The Angle-Angle Similarity Postulate states that if two angles of one triangle are congruent to two angles of another triangle, then the triangles are similar.

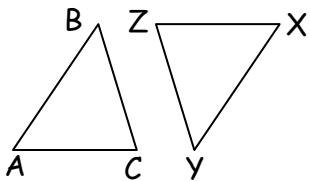
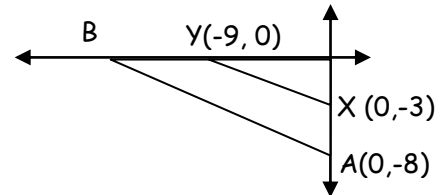
1. Find x , y , and z .



2. Find a , b , and c .



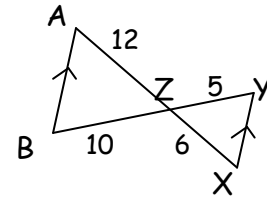
3. Given that $\triangle ABZ \sim \triangle XYZ$, find the coordinates of B and the scale factor.



4. Use the AA Similarity theorem to choose the correct statement if $\triangle ABC \sim \triangle XYZ$

- A. $\angle XZY \sim \angle CAB$ B. $\angle ZXY \sim \angle CAB$ C. $\angle XZY \sim \angle ABC$
 D. $\angle XYZ \sim \angle BCA$

5. Determine whether the two triangles are similar. Defend your answer and write a similarity statement.



6-10. Complete the proof using similar triangles.

Given: $A(-1,2)$, $B(-3,-2)$, $C(3,0)$, $D(-2,0)$, and $E(1,1)$

Prove: $\triangle ADE \sim \triangle ABC$

1. _____ (6)

1. Given

2. $AD = \sqrt{5}$; $AB = 2\sqrt{5}$; $AE = \sqrt{5}$ and $AC = 2\sqrt{5}$

2. _____ (7)

3. _____ (8)

3. Division Prop of Equality

4. $\angle A \cong \angle A$

4. _____ (9)

5. $\triangle ADE \sim \triangle ABC$

5. _____ (10)

Name: _____

Date: _____

Answer Key

Similarity: Triangle Theorems

1. $x = 2\sqrt{15}$; $y = 2\sqrt{6}$; $z = 2\sqrt{10}$

2. $a = 12$; $b = 4\sqrt{13}$; $c = 8$

3. $B(-24,0)$; $8/3$

4. B

5. Yes, because alternate interior angles theorem; $\triangle ABZ$ is a dilation of $\triangle XYZ$ with a factor of 2.

6. $A(-1,2)$, $B(-3,-2)$, $C(3,0)$, $D(-2,0)$, and $E(1,1)$

7. Distance Formula

8. $\frac{AD}{AB} = \frac{AE}{AC} = \frac{1}{2}$

9. Reflexive Property of \cong

10. SAS \sim